

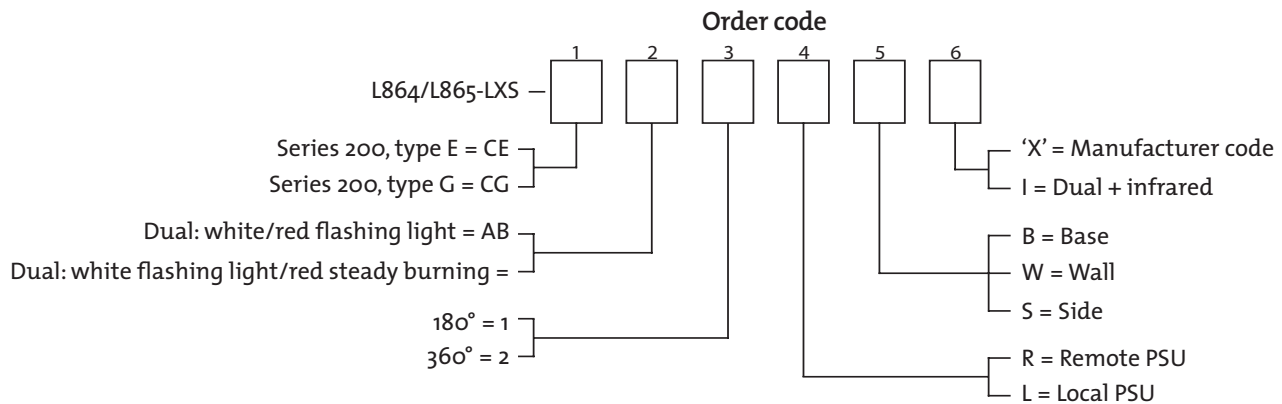
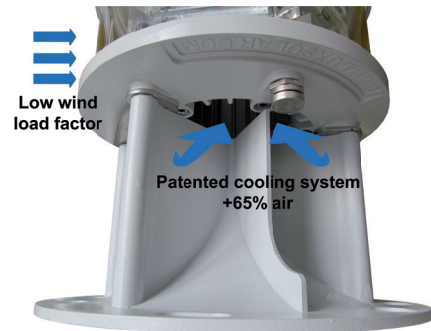
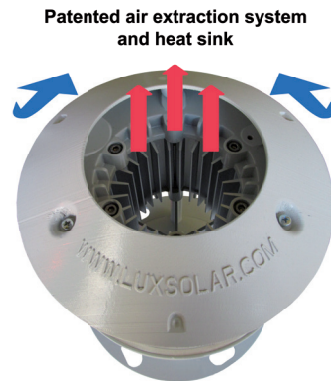
MIOL-AB MIOL-AC

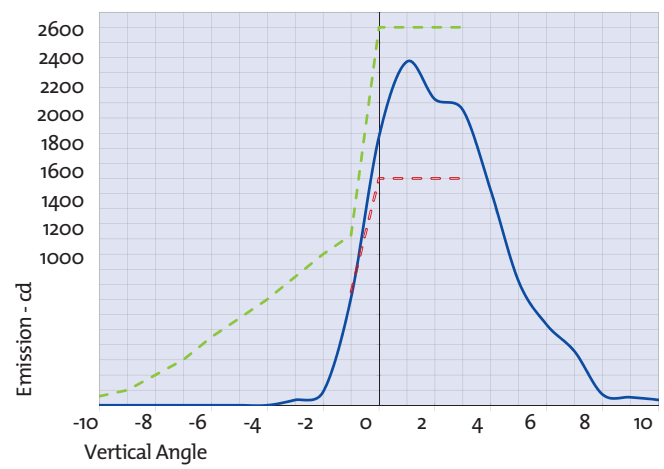
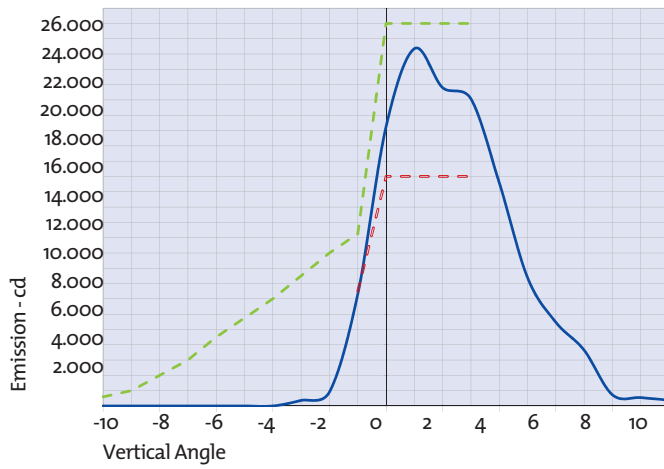


MEDIUM INTENSITY

Medium intensity obstruction light multiled type, compliance to ICAO type A and FAA L-865, FAA DUAL L-864/L-865, single or twin, day and night.

- Based on LED technology
- Flashing white light (20-60 fpm), day mode
- Flashing red light (20-60 fpm), night mode (MIOL-AB)
- Steady burning red light in night mode (MIOL-AC)
- Visible red light + infrared emission (see code 6)
- Long life time >10+ years expectancy
- Stabilized light output
- Inertized internal atmosphere
- Borosilicate cover protection
- Protection degree: IP 66
- Weight: 4,9 kg
- Power consumption for day mode MIOL-AB/AC @20fpm: 57W
- Power consumption for night mode MIOL-AB @20fpm: 21W
- Power consumption for night mode MIOL-AC steady burning: 65,4W
- Power consumption for day mode MIOL-AB/AC @60fpm: 96W
- Power consumption for night mode MIOL-AB @60fpm: 24W



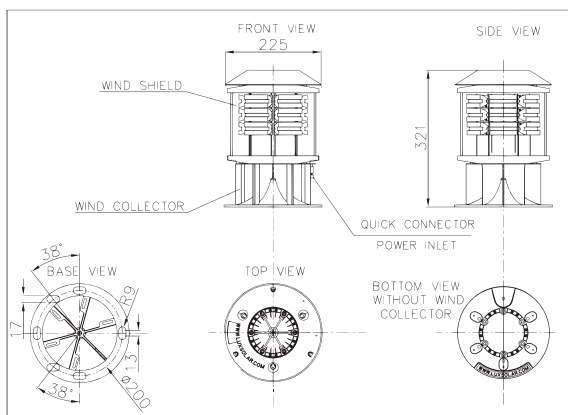


- L865-LXS-A average emission level at 90°C ambient temperature
- ICAO ANNEX 14 medium intensity type A Minimum Required Intensity
- ICAO ANNEX 14 medium intensity type A Maximum Required Intensity

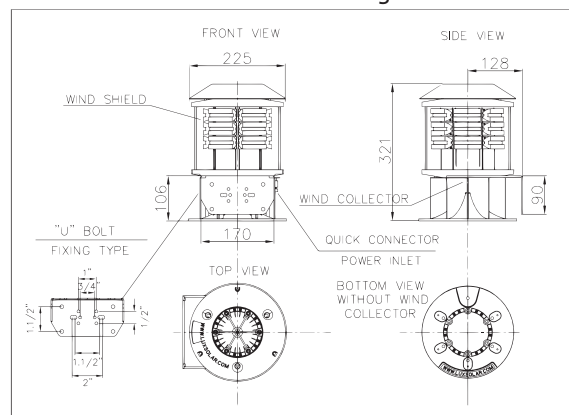
- L864-LXS-B average emission level at 90°C ambient temperature
- ICAO ANNEX 14 medium intensity type B/C Minimum Required Intensity
- ICAO ANNEX 14 medium intensity type B/C Maximum Required Intensity

Order code 5

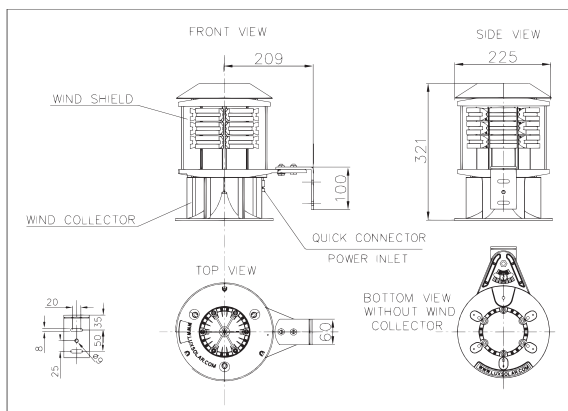
B = Base



S = Side mounting



W = Wall mounting



Available versions

