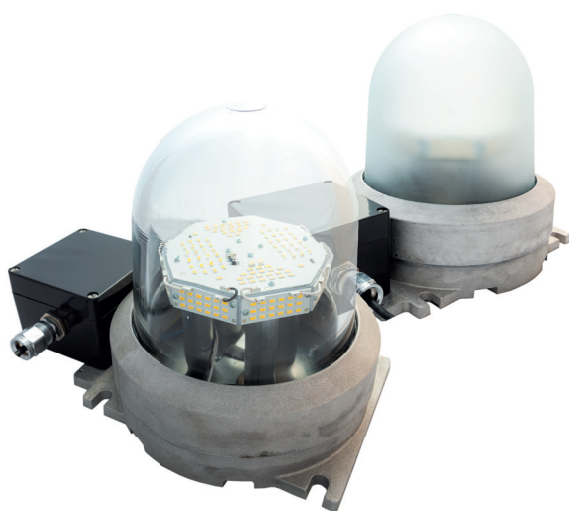


IQL-LED series

LED bulk head luminaire
> 100.000 hours operational life time
5-year operational warranty



Locations where omnidirectional light is needed, the new IQL-LED series will provide the necessary lighting. Some of the light even goes upwards making inspections of cable ladders visually much easier. With its robust design and very low power consumption of 45Watts, the luminaire produces an impressive light output of > 6.000 lumen. The IQL-LED offers due to its light distribution characteristic an absolutely ideal all-around luminaire for industrial, indoor and outdoor applications. The luminaire is made in an aluminum alloy, seawater resistant and anodized to withstand the most severe conditions for chemical and offshore industries. The Junction box is IP 66 and offers the possibility to loop from luminaire to luminaire. The transparent part is made of shock resistant borosilicate glass, clear or frosted.

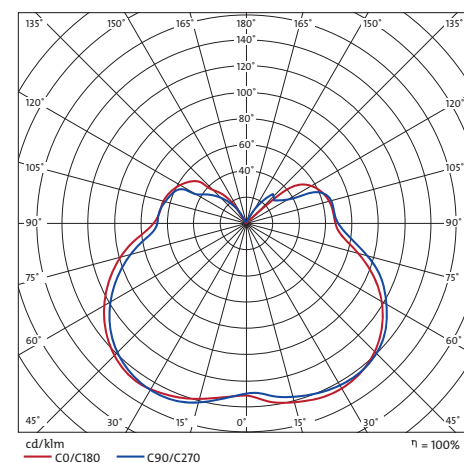
Features:

- + Shock and vibration resistant
- + Immediate (re-)ignition
- + Universal burning position
- + Lumen depreciation 30% at 100.000 hours

General specifications:

Housing:	Seawater resistant anodized aluminium
Lens:	Toughened borosilicate glass
Light source:	LED
Voltage:	230V ac/dc
System power:	45W
Type luminaire class:	Class 1
Ambient temperature range:	-30°C up to +50°C
Luminous flux:	> 6.000 Lumens
Light color:	4.000K (white light)
Ingress Protection:	IP66
Power factor:	>0.9
Electrical connection:	External GRP junction box (120 x 120 x 90mm) c/w 4mm ² terminals and 2x M25 polyamide cable glands
Weight:	Approx. 11Kgs

Polar diagram:

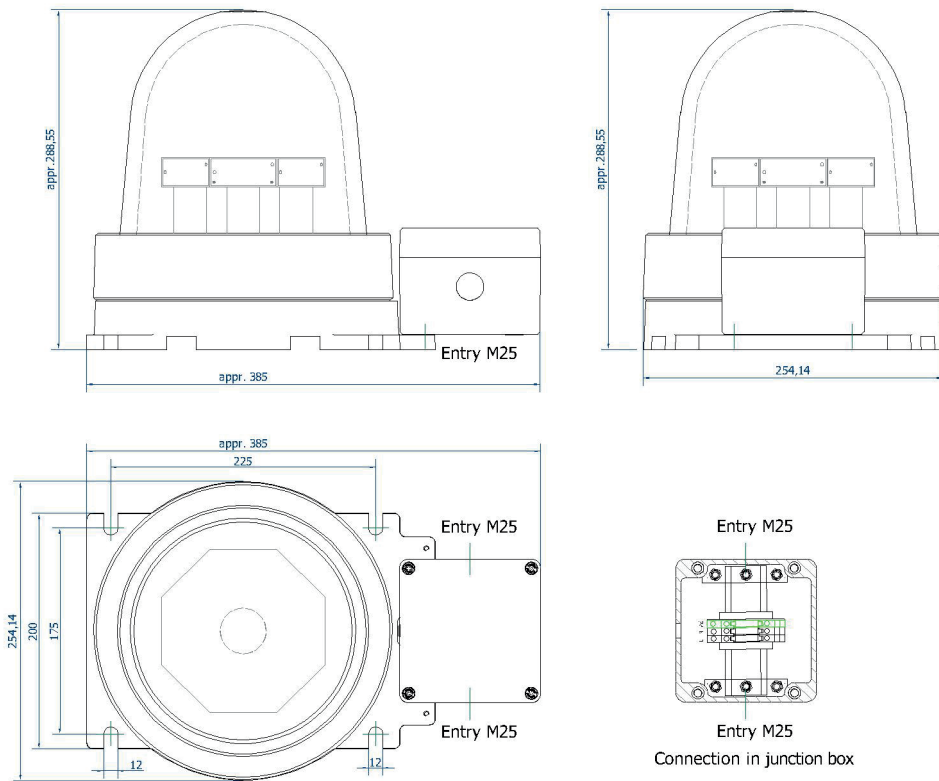


Optional:

- + EX certified (ATEX and IECEx) for use in Zone 1 & 2 for gas applications and Zone 21 & 22 for dust applications:
 - Ex db eb IIC T6 Gb for Gas applications
 - Ex tb IIIC 85°C Db for Dust applications
- + External reflector for high bay applications

Article code	Type	Wattage	Voltage	Weight	Lumen
EIS1O1NA31Z	IQL-LED45 clear	45	230Vac / dc	11 Kg	6100
EIH1O1NA31Z	IQL-LED45 frosted	45	230Vac / dc	11 Kg	6100

Drawings:



Life time expectancy:

